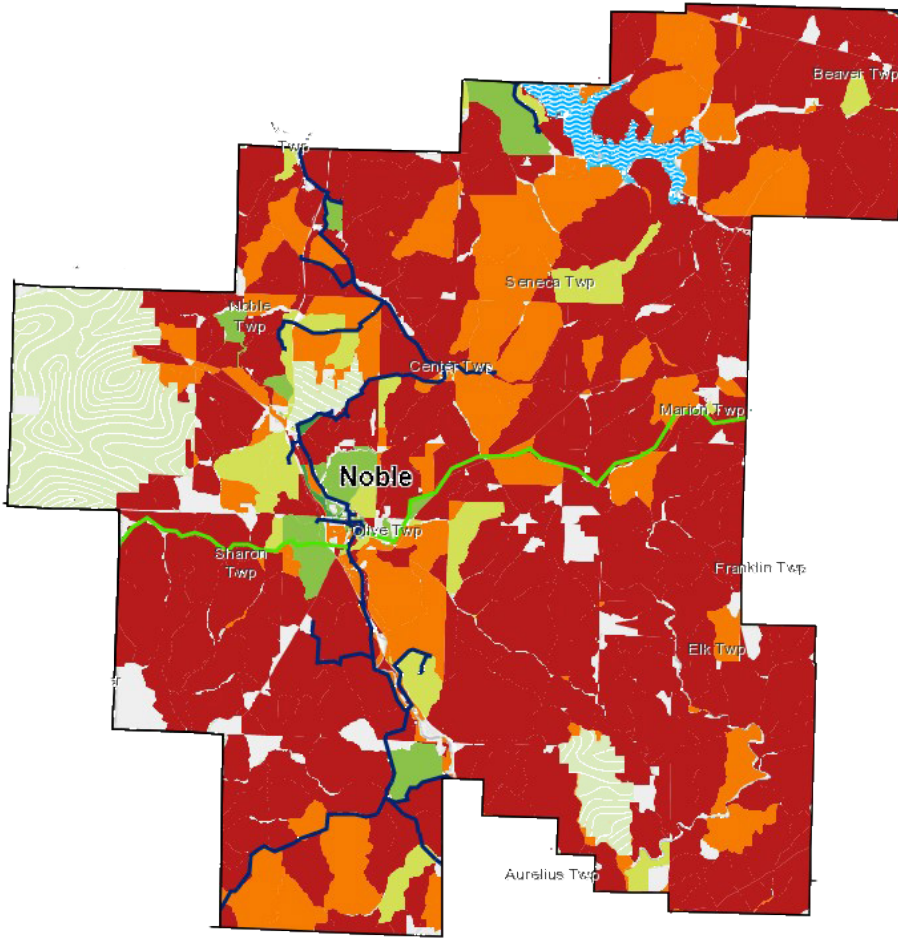


# NOBLE COUNTY

## broadband profile



## OVERVIEW

**92%**  
of the populated area  
& **62%**  
of households

**DO NOT HAVE ACCESS TO MINIMUM 25/3 Mbps**

the county has .....

**361.6 mi<sup>2</sup>**  
of populated area

**334 mi<sup>2</sup>**  
are unserved

0-10 Mbps: **71.9%**  
10-25 Mbps: **20.4%**  
*\*no data for 2.7% of area*

**6,469 households**

**4,006 unserved**

0-10 Mbps: **40.3%**  
10-25 Mbps: **21.6%**  
*\*no data for 21.2% of households*

## DEVELOPMENT DISTRICT

BUCKEYE HILLS  
**regional council**  
contact  
buckeyehills.org  
740-374-9436

**0-10 Mbps** **10-25Mbps** **25-50 Mbps** **50-100 Mbps** **100+ Mbps**

- State owned land or park
- lake, river, or body of water
- Existing Open Middle-Mile
- Proposed Fiber
- Areas with No Data (0 speed tests conducted)

## 60.95 miles of Open Middle-Mile in Noble County

Open middle mile fiber lets competing providers lease capacity on an equal footing to bridge the gap between their central offices and local communities. Middle mile is needed not only to reach homes and businesses but also to support 5G mobile coverage.

Coverage ratings are derived from Ookla Speedtest Intelligence® data licensed by InnovateOhio from the State of Ohio for the months of February 2020 through May 2021. Ratings are color-coded based on median calculated download/upload speeds. Cellular (LTE, 5G) and satellite providers were excluded from our data. Coverage ratings in areas marked as state owned land and parks is not visible on the printed map for clarity, but was included in data calculation. For a full description of our methodology visit [connectingappalachia.org](http://connectingappalachia.org)

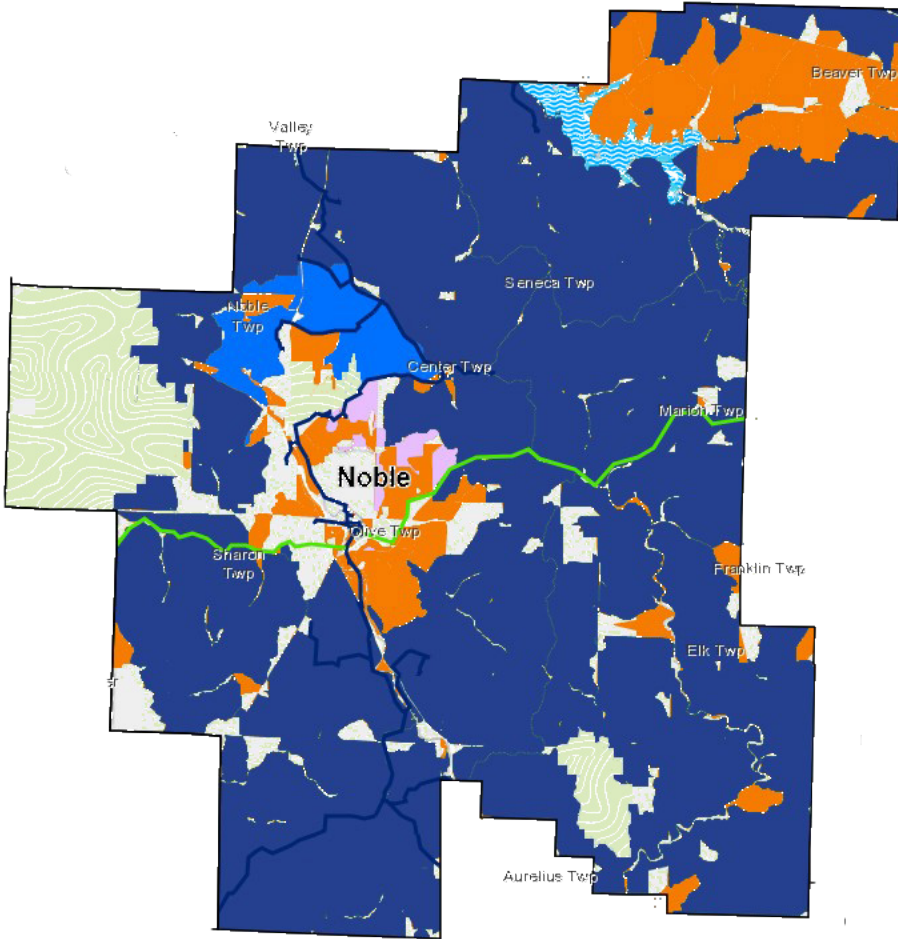


Connecting Appalachia



# PRIORITY AREAS

below 25/3 Mbps



Providers that have received Federal RDOF subsidy to improve internet access are illustrated by color

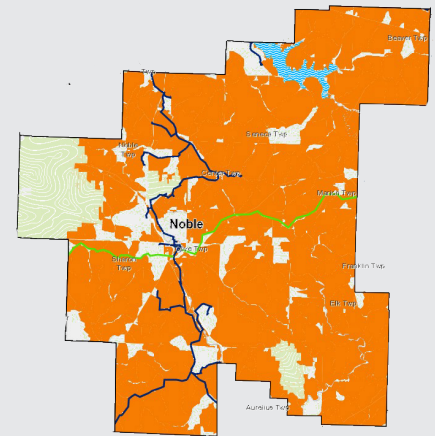
- Charter Communications
- Mercury Wireless
- Connect Everyone

- Areas of greatest need that are likely to remain below 25/3 Mbps without new government investment

## WHY NOW?

As funding is approved at the state and federal level **advocacy to prioritize the areas of greatest need are essential** to working towards eliminating the digital divide in Appalachia Ohio

In our post-COVID economy, broadband is as important as water, electricity, and roads.



**ORANGE** = current extent of areas with less 25/3 Mbps, this is the base map beneath the RDOF auction winners in the map to the left.

### DEVELOPMENT DISTRICT

BUCKEYE HILLS  
**regional council** contact  
buckeyehills.org  
740-374-9436



Connecting Appalachia



# OUR METHODOLOGY

..... *breaking down the data*

## Ohio Broadband Availability Map Methodology

### About This Map

This map was created under contract by Reid Consulting Group, LLC. for Buckeye Hills Regional Commission (BHRC). This map, collectively with county maps created for Ohio Valley Regional Development Commission (OVRDC) and Ohio Mid-Eastern Government Association (OMEGA) are being provided to Connecting Appalachia. Connecting Appalachia is a consortium of local governments, regional economic development councils, and industry professionals working to increase economic opportunity for Appalachia by expanding access to quality, affordable broadband. Broadband availability is displayed at the Census Block level.

### Methodology

Coverage ratings are derived from Ookla Speedtest Intelligence® data licensed by InnovateOhio from the State of Ohio for the months of February 2020 through May 2021. Ratings are color coded based on median calculated speed tiers (i.e., download/upload speeds): Below 10/1Mbps is deep red; at least 10/1Mbps and less than 25/3Mbps is orange; at least 25/3Mbps and less than 50/10Mbps is yellow; at least 50/10Mbps and less than 100/20 Mbps is light green; and above 100/20Mbps is bright green.

Where possible, areas with no Ookla data have been assigned an extrapolated rating based on comparative analysis of population density, FCC Form 477 data, and RDOF Phase 1 auction award maps. Extrapolation is effective at low population densities but becomes less accurate as density increases. Areas that cannot be assigned an extrapolated rating are shown in white on the map. To protect consumer privacy, Ookla limits location precision to 100 meters by 100 meters. As a result, a single location may include multiple households and many individual tests. All speed tests within a 100 meter radius were averaged to generate an overall speed by location. Census block ratings were derived by taking the median of all location averages within each block. The following filters were applied to the Ookla data before ratings were calculated:

- Only fixed broadband sources (Cable, DSL, fixed wireless) were included. 3G/LTE/5G mobile data connections were excluded, as were satellite providers.
- Test results with high first-hop latency were excluded to limit the 'skewing' effects of misconfigured wi-fi routers, interference from unshielded household devices, and low wi-fi signal strength.

### Reference Layers

The map includes LBRS address data from the State of Ohio. Block Group, Census Block Group and Block boundaries are taken from the 2010 U.S. Census.

### Disclaimer

This map is presented "as is" for informational purposes. Reid Consulting Group does not warrant the accuracy, adequacy or completeness of this information and expressly disclaims liability for any errors or omissions. For More Information To learn more about rural broadband issues in Ohio or to request additional information about how this map was developed visit: [connectingappalachia.org](http://connectingappalachia.org).



Connecting Appalachia

